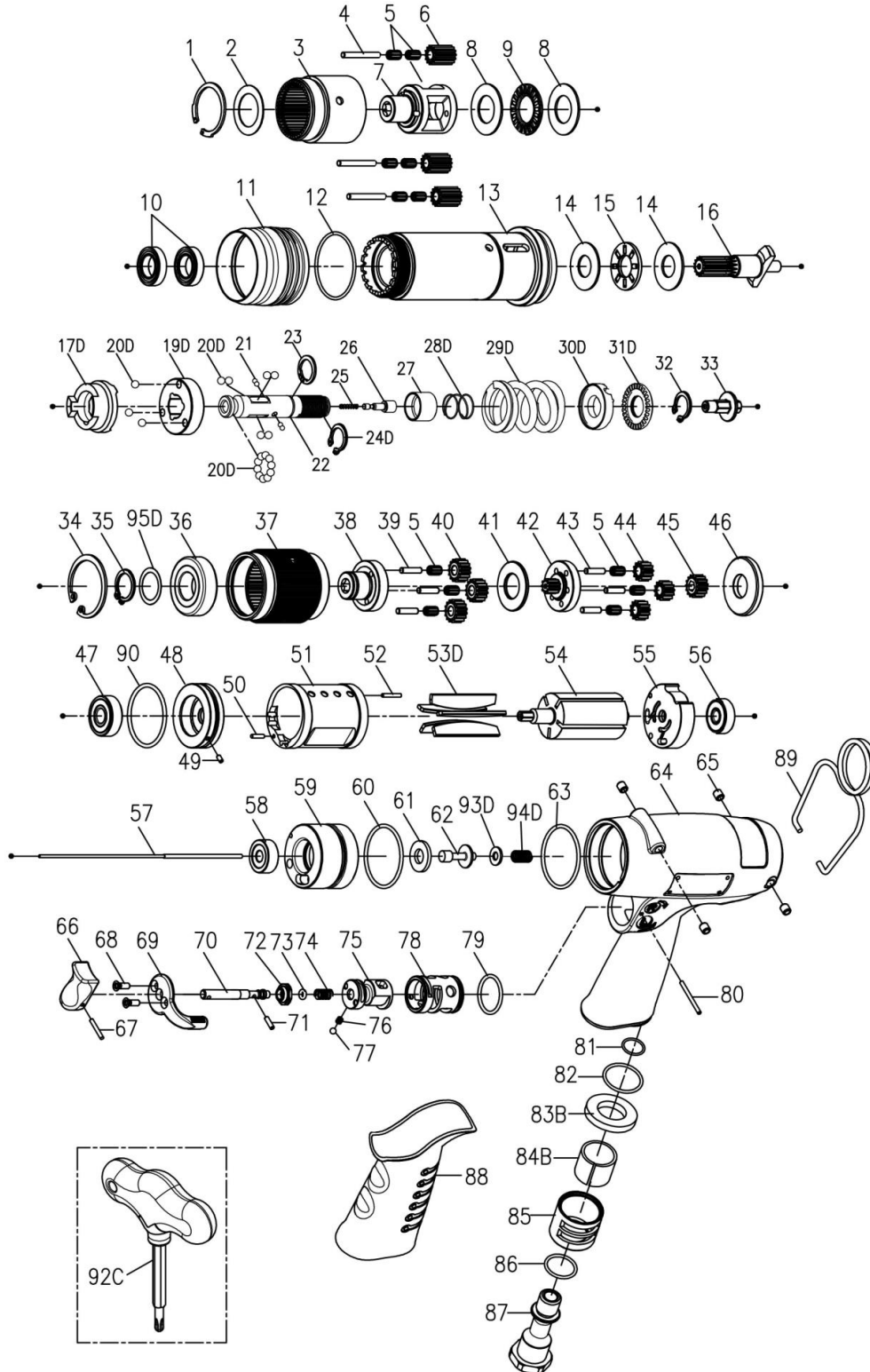


EXPLODED VIEW & PARTS LIST



Model	Drive Size	Torque Range		Free Speed	Weight		Air Inlet	Noise Level
		in-lb	N.m	RPM	lb	kg	inch	dB(A)
23575	1/4" Hex.	165 - 300	18.6 - 33.7	160	3.97	1.8	1/4"	85

TORQUE CONTROLLED OFFSET MOTOR

Edition : D

Index No.	Part No.	Description	Q'ty	Index No.	Part No.	Description	Q'ty
1	00-6105	Snap Ring (IR-28)	1	90	00-41241	O-Ring (ø32xø1.5)	1
2	BS60S-411	Washer	1	48	BS40S-301	Front Plate	1
3	BS60S-440	Internal Gear	1	49	00-3328	Spring Pin (ø2x4L)	1
4	000-3436	Pin (ø3x23L)	3	50	00-3430	Pin (ø2x8L)	1
5	00-2422	Needle Bearing (K3X5X7)	6	51	BS40S-302	Cylinder	1
6	BS60S-443B	Planet Gear B	3	52	00-3404	Pin (ø2x17.8L)	1
7	BS60S-422	Idler Gear Plate	1	53D	BD40S-304D	Rotor Blade	5
8	00-1515	Washer (ø15.2xø27.8x1t)	2	54	BS60S-303	Rotor	1
9	00-2801	Roller Bearing (NTB1528)	1	55	BS40S-305B	Rear End Plate	1
10	00-2352	Ball Bearing (6801ZZ)	2	56	00-2323	Ball Bearing (626ZZ)	1
11	B40S-207	Adjusting Cover	1	57	BS40SL-314	Valve Stem	1
12	00-4174	O-Ring (ø31xø1.5)	1	220-BSJ40P-3009-1000 Cage Units			1
13	BS40R-201	Clutch Housing	1	58	C20-320	Holder Cap	1
14	00-1516	Washer (ø12xø26x1t)	2	59	C40-309	Cage	1
15	00-2804	Roller Bearing (NTB1226)	1	60	00-41206	O-Ring (ø31.47xø1.78)	1
16	BS60S-732	Shaft Gear	1	61	C20-319	Shutting Spacer (PU)	1
220-BD40S-4016-1000 Clutch Units				62	CS30-318	Shut Bar	1
17D	BD40S-425	Control Ring	1	93D	00-1525	Plain Washer	1
19D	BD40S-433	Spring Seat	1	94D	C20-507	Spring	1
20D	00-3815	Steel Ball (5/32")	19	220-BSJ40P-1001-1G63 Motor Housing Units			1
21	00-3835	Steel Ball (ø2.5)	4	63	00-41210	O-Ring (ø35xø2)	1
22	B30S-416	Transmission Shaft	1	64	C40-101	Motor Housing	1
23	000-3012I	Snap Ring (ISTW-12)	1	65	I40S-108	Bushing	4
24D	00-3516	Snap Ring(STW-11)	1	66	C20-504	Trigger	1
25	B30-524	Spring	1	67	00-3354	Spring Pin (ø2x14L)	1
26	B30S-527	Piston	1	68	00-0514	Flat Head Screw (M3x8L)	2
27	B30S-449	Control Ring	1	69	I100-503	Regulator Knob	1
28D	B30S-427	Spring	1	70	IS100-505C	Valve Stem	1
29D	B30S-429	Spring	1	71	00-3356	Spring Pin (ø2x8L)	1
30D	BD50S-431	Adjusting Lock Ring	1	72	I100-508	Bushing	1
31D	BD40S-430	Adjusting Nut	1	73	00-41172	O-Ring (ø2.57xø1.78)	1
32	00-3507	Snap Ring (S12)	1	74	I100-507	Spring	1
33	B30S-421	Connecting Shaft	1	75	IS100-502	F/R Valve	1
220-BS60S-4040-1000 Gear Box Units				76	I100-506	Spring	1
34	00-3104	Snap Ring (R32)	1	77	00-3813	Steel Ball (1/8")	1
35	00-3504	Snap Ring (S15)	1	78	I100-501	Valve Sleeve	1
95D	BD40S-441	Washer	1	79	00-41267	O-Ring (ø15.5xø1.5)	1
36	00-2391	Ball Bearing (6002LU)	1	80	I100-511	Pin	1
37	BS40S-440	Internal Gear	1	81	00-4157	O-Ring (ø10xø1.5)	1
38	BS40S-442	Front Gear Cage	1	82	00-41125	O-Ring (ø20.35xø1.78)	1
39	00-3444	Pin (ø3x12.8L)	3	83B	C20S-601	Muffler	1
5	00-2422	Needle Bearing (K3X5X7)	6	84B	I70-601	Muffler	1
40	BS40S-443A	Planet Gear A	3	85	I100-603	Exhaust Deflector	1
41	BS40S-444	Washer	1	86	00-41111	O-Ring (ø16xø1.5)	1
42	BS40S-452	Rear Gear Cage Assy.	1	87	I100-604A	Air Inlet (1/4" PF-19)	1
43	00-3408	Pin (ø3x12L)	3	87	I100-604B	Air Inlet (1/4" PT-19)	1
44	BS60S-443A	Planet Gear A	3		I100-604C	Air Inlet (1/4" NPT-18)	
45	BS60S-447	Rotor Gear	1	88	I90-103	Housing Rubber	1
46	BS40S-448	Rear Cover	1	89	I40S-102	Hanger	1
220-BS60P-3003-1000 Motor Units				92C	BS40S-012	Adjusting Bit	1
47	00-2332	Ball Bearing (608ZZ)	1				

Warranty

FULL SIX MONTH WARRANTY

Jiffy Air Tool warrants its products against any defects that are due to faulty material or workmanship for a six month period after the original date of customer purchase. This warranty does not include damage to the product resulting from accident, misuse, or repairs performed by unauthorized personnel. If the product should become defective within the warranty period, or you have questions regarding warranty or service, call Customer Service.