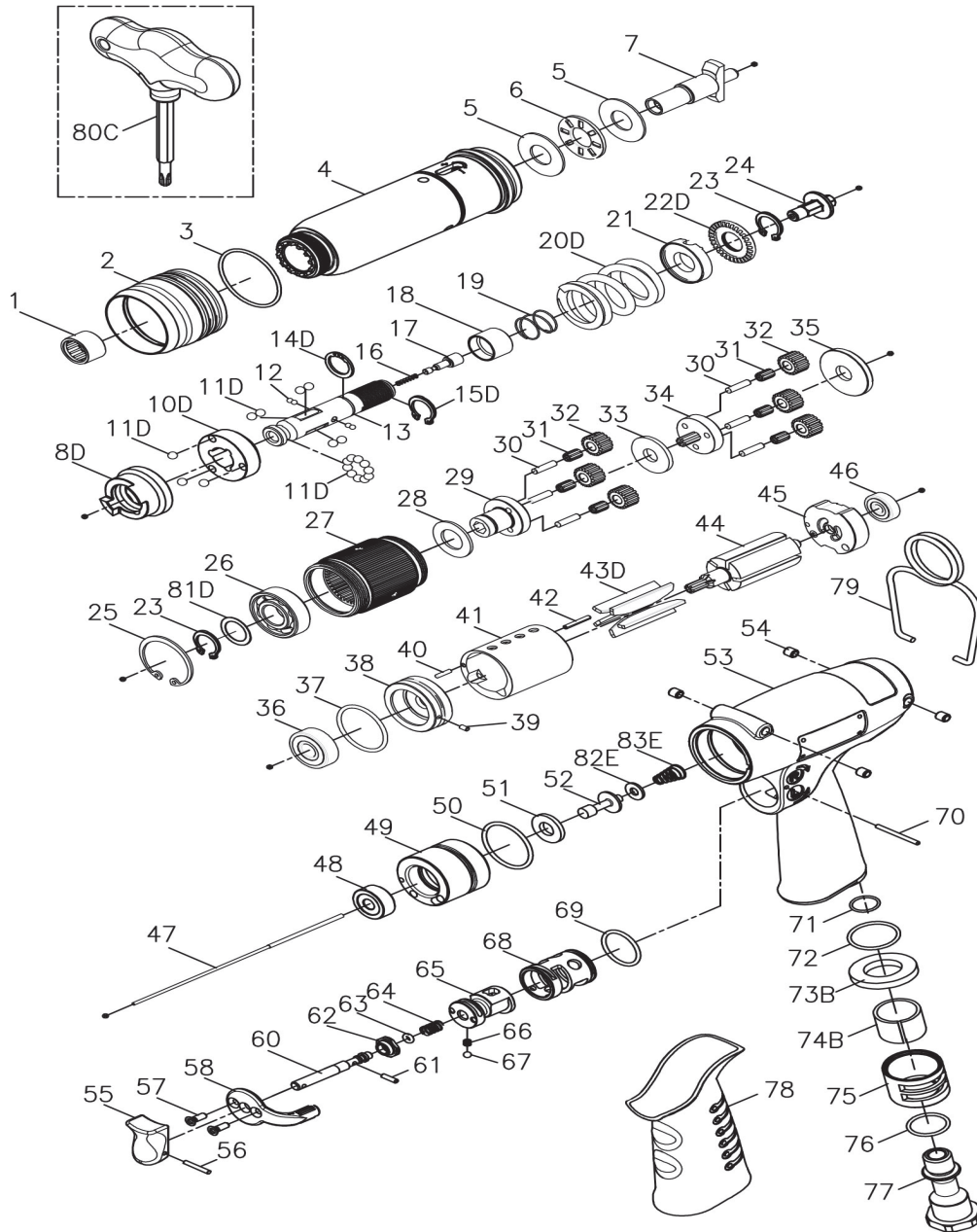


EXPLODED VIEW & PARTS LIST



Model	Drive Size	Torque Range		Free Speed	Weight		Air Inlet	Noise Level
		in-lb	N.m	RPM	lb	kg	inch	dB(A)
23572	1/4" Hex.	35 - 80	4 - 9	250	2.91	1.32	1/4"	75

Warranty

FULL SIX MONTH WARRANTY

Jiffy Air Tool warrants its products against any defects that are due to faulty material or workmanship for a six month period after the original date of customer purchase. This warranty does not include damage to the product resulting from accident, misuse, or repairs performed by unauthorized personnel. If the product should become defective within the warranty period, or you have questions regarding warranty or service, call Customer Service.

MODEL: 23572

TORQUE CONTROLLED OFFSET MOTOR

Index No.	Part No.	Description	Q'ty	Index No.	Part No.	Description	Q'ty	
1	00-2415	Needle Bearing	1	42	00-3404	Pin	1	
2	B30S-207	Adjusting Cover	1	43D	BD30S-304D	Rotor Blade	5	
3	00-4174	O-Ring	1	44	BS30R-160-303	Rotor	1	
4	BS30S-250-201	Clutch Housing	1	45	C30S-305	Rear End Plate	1	
5	00-1516	Washer	2	46	00-2355	Ball Bearing	1	
6	00-2804	Roller Bearing	1	47	BS30SL-160-314	Valve Stem	1	
7	B30R-405	Anvil	1	220-CS30P-3009-1000		Cage Units	1	
220-BD30S-4016-1000				Clutch Units				1
8D	BD30S-425	Clutch Ring	1	48	C20-320	Holder Cap	1	
10D	BD30S-433	Spring Seat	1	49	C30-309	Cage	1	
11D	00-3815	Steel Ball (5/32")	19	50	00-41177	O-Ring	1	
12	00-3835	Steel Ball	4	51	C20-319	Shutting Spacer	1	
13	B30S-416	Transmission Shaft	1	52	CS30-318	Shut Bar	1	
14D	000-3012I	Snap Ring	1	82E	00-1525	Plain Washer	1	
15D	00-3516	Snap Ring	1	83E	CS20SL-515	Spring	1	
16	B30-524	Spring	1	220-BSJ20P-1001-1G63		Motor Housing Units	1	
17	B30S-527	Piston	1	53	C20-101B	Motor Housing	1	
18	B30S-449	Control Ring	1	54	I40S-108	Bushing	4	
19	B30S-427	Spring	1	55	C20-504	Trigger	1	
20D	BD30S-429	Spring	1	56	00-3354	Spring Pin	1	
21	B30S-431	Adjusting Lock Ring	1	57	00-0514	Flat Head Screw	2	
22D	BD40S-430	Adjusting Nut	1	58	I100-503	Regulator Knob	1	
23	00-3507	Snap Ring	1	60	IS40-505C	Valve Stem	1	
24	B30S-421	Connecting Shaft	1	61	00-3356	Spring Pin (φ2x8L)	1	
220-BS30SL-4040-1000				Gear Box Units				1
25	00-3113	Snap Ring	1	62	I100-508	Bushing	1	
23	00-3507	Snap Ring	1	63	00-41172	O-Ring	1	
81D	BD15S-441	Washer	1	64	I40-507	Spring	1	
26	00-2305A	Ball Bearing	1	65	IS40-502	F/R Valve	1	
27	BS30R-160-440	Internal Gear	1	66	I100-506	Spring	1	
28	C20S-441	Washer	1	67	00-3813	Steel Ball (1/8")	1	
29	BS30R-160-442	Front Gear Cage	1	68	I40-501	Valve Sleeve	1	
30	00-3408	Pin	6	69	00-41267	O-Ring	1	
31	00-2422	Needle Bearing	6	70	I100-511	Pin	1	
32	BS30R-160-443A	Plant Gear A	6	71	00-4157	O-Ring	1	
33	B30S-160-444	Washer	1	72	00-41244	O-Ring	1	
34	BS30R-160-452	Rear Gear Cage Assy.	1	73B	B30-601	Muffler	1	
35	C30S-448	Rear Cover	1	74B	I40-601	Muffler	1	
220-BS30SL-3003-2000				Motor Units				1
36	00-2332	Ball Bearing	1	75	I40-603	Exhaust Deflector	1	
37	00-41177	O-Ring	1	76	00-4121	O-Ring	1	
38	B20S-301	Front Plate	1		I40-604A	Air Inlet (1/4"PF-19)		
39	00-3328	Spring Pin	1	77	I40-604B	Air Inlet (1/4"PT-19)	1	
40	00-3430	Pin	1		I40-604C	Air Inlet (1/4"NPT-18)		
41	C30S-302	Cylinder	1	78	I60-103	Housing Rubber	1	
				79	I40S-102	Hanger	1	
				80C	BS40S-012	Adjusting Bit	1	

JIFFY AIR TOOL

USA 2254 Conestoga Drive | Carson City NV 89706-0434
Europe Unit 8 Lane End Industrial Park | High Wycombe | Bucks HP14 3BY UK

JIFFYAIRTOOL.COM

1-800-828-8665 U.S. and Canada 1-775-883-1072 International
+49 163 255 48 69 Europe