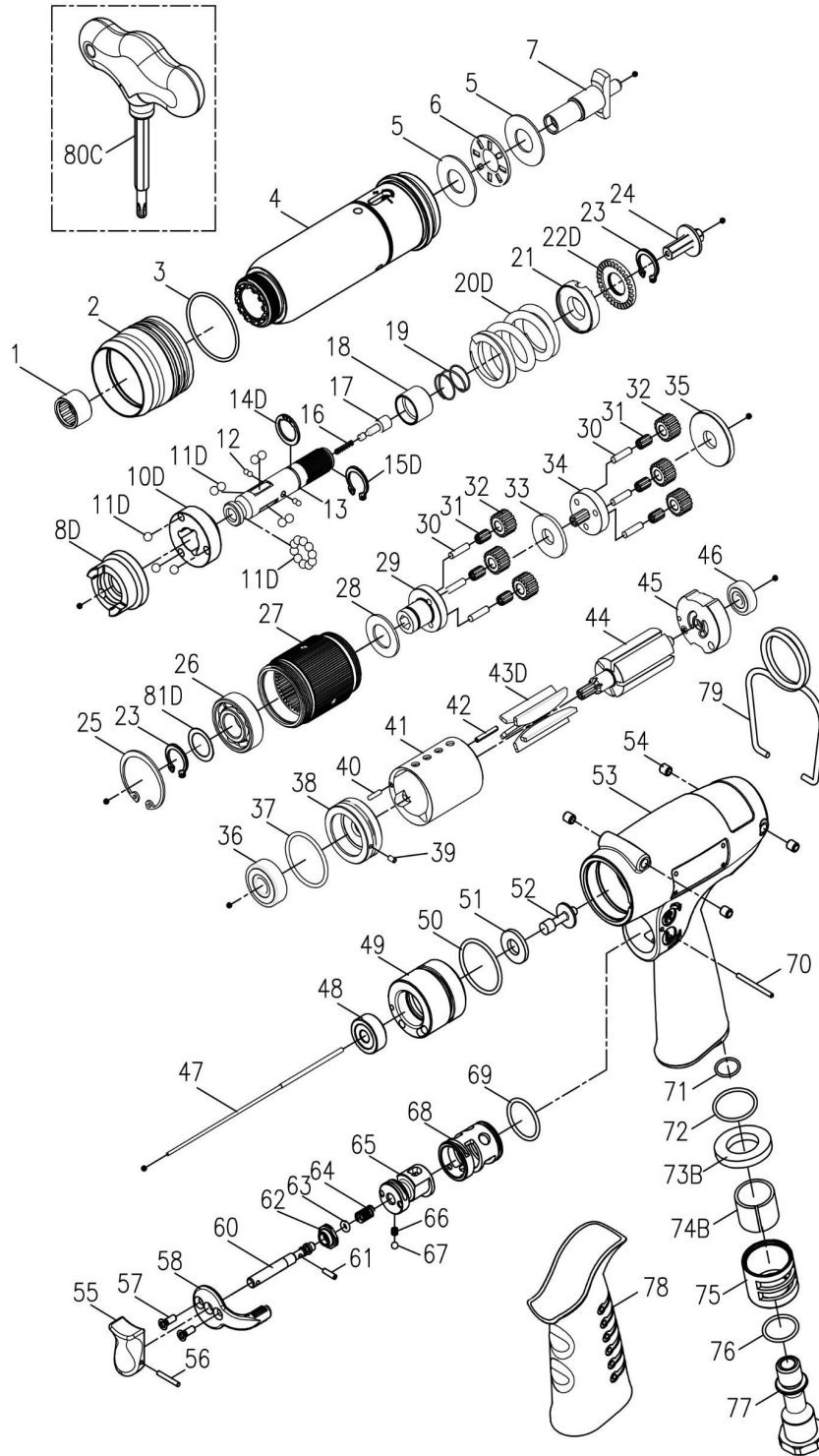


**EXPLODED VIEW & PARTS LIST**



Model	Drive Size	Torque Range		Free Speed	Weight		Air Inlet	Noise Level
		in-lb	N.m	RPM	lb	kg	inch	dB(A)
23572	1/4" Hex.	35 - 80	4 - 9	250	2.91	1.32	1/4"	75

# MODEL: 23572

## TORQUE CONTROLLED OFFSET MOTOR

Edition : F

Index No.	Part No.	Description	Q'ty	Index No.	Part No.	Description	Q'ty
1	00-2415	Needle Bearing (HK1210)	1	41	C30S-302	Cylinder	1
2	B30S-207	Adjusting Cover	1	42	00-3404	Pin (∅2*17.8)	1
3	00-4174	O-Ring (∅31x∅1.5)	1	43D	BD30S-304D	Rotor Blade	5
4	BS30S-250-201	Clutch Housing	1	44	BS30R-160-303	Rotor	1
5	00-1516	Washer (∅12x∅26x1t)	2	45	C30S-305	Rear End Plate	1
6	00-2804	Roller Bearing (NTB1226)	1	46	00-2355	Ball Bearing(625Z)	1
7	B30R-405	Anvil	1	47	BS30SL-160-314	Valve Stem	1
<b>220-BD30S-4016-1000 Clutch Units</b>			<b>1</b>	<b>220-CS30P-3009-1000 Cage Units</b>			<b>1</b>
8D	BD30S-425	Clutch Ring	1	48	C20-320	Holder Cap	1
10D	BD30S-433	Spring Seat	1	49	C30-309	Cage	1
11D	00-3815	Steel Ball (5/32")	19	50	00-41177	O-Ring (∅25.12x∅1.78)	1
12	00-3835	Steel Ball (∅2.5)	4	51	C20-319	Shutting Spacer (PU)	1
13	B30S-416	Transmission Shaft	1	52	CS30-318	Shut Bar	1
14D	000-3012I	Snap Ring (ISTW-12)	1	<b>220-BSJ20P-1001-1G63 Motor Housing Units</b>			<b>1</b>
15D	00-3516	Snap Ring (STW-11)	1	53	C20-101B	Motor Housing	1
16	B30-524	Spring	1	54	I40S-108	Bushing	4
17	B30S-527	Piston	1	55	C20-504	Trigger	1
18	B30S-449	Control Ring	1	56	00-3354	Spring Pin (∅2x14L)	1
19	B30S-427	Spring	1	57	00-0514	Flat Head Screw (M3x8L)	2
20D	BD30S-429	Spring	1	58	I100-503	Regulator Knob	1
21	B30S-431	Adjusting Lock Ring	1	60	IS40-505C	Valve Stem	1
22D	BD40S-430	Adjusting Nut	1	61	00-3356	Spring Pin (∅2x8L)	1
23	00-3507	Snap Ring (S12)	1	62	I100-508	Bushing	1
24	B30S-421	Connecting Shaft	1	63	00-41172	O-Ring (∅2.57x∅1.78)	1
<b>220-BS30SL-4040-1000 Gear Box Units</b>			<b>1</b>	64	I40-507	Spring	1
25	00-3113	Snap Ring (R28)	1	65	IS40-502	F/R Valve	1
23	00-3507	Snap Ring (S12)	1	66	I100-506	Spring	1
81D	BD15S-441	Washer	1	67	00-3813	Steel Ball (1/8" )	1
26	00-2305A	Ball Bearing (6001)	1	68	I40-501	Valve Sleeve	1
27	BS30R-160-440	Internal Gear	1	69	00-41267	O-Ring (∅15.5x∅1.5)	1
28	C20S-441	Washer	1	70	I100-511	Pin	1
29	BS30R-160-442	Front Gear Cage	1	71	00-4157	O-Ring (∅10x∅1.5)	1
30	00-3408	Pin (∅3x12L)	6	72	00-41244	O-Ring (∅19x∅1.5)	1
31	00-2422	Needle Bearing (K3X5X7)	6	73B	B30-601	Muffler	1
32	BS30R-160-443A	Plant Gear A	6	74B	I40-601	Muffler	1
33	B30S-160-444	Washer	1	75	I40-603	Exhaust Deflector	1
34	BS30R-160-452	Rear Gear Cage Assy.	1	76	00-4121	O-Ring (∅15x∅1.5)	1
35	C30S-448	Rear Cover	1	I40-604A	Air Inlet (1/4" PF-19)	1	
<b>220-BS30SL-3003-2000 Motor Units</b>			<b>1</b>	I40-604B	Air Inlet (1/4" PT-19)		
36	00-2332	Ball Bearing (608ZZ)	1	I40-604C	Air Inlet (1/4" NPT-18)		
37	00-41177	O-Ring (∅25.12x∅1.78)	1	78	I60-103	Housing Rubber	1
38	B20S-301	Front Plate	1	79	I40S-102	Hanger	1
39	00-3328	Spring Pin (∅2x4L)	1	80C	BS40S-012	Adjusting Bit	1
40	00-3430	Pin (∅2x8L)	1				

### Warranty

#### FULL SIX MONTH WARRANTY

Jiffy Air Tool warrants its products against any defects that are due to faulty material or workmanship for a six month period after the original date of customer purchase. This warranty does not include damage to the product resulting from accident, misuse, or repairs performed by unauthorized personnel. If the product should become defective within the warranty period, or you have questions regarding warranty or service, call Customer Service.

**JIFFY AIR TOOL**

**USA** 2254 Conestoga Drive | Carson City NV 89706-0434  
**Europe** Unit 8 Lane End Industrial Park | High Wycombe | Bucks HP14 3BY UK

**JIFFYAIRTOOL.COM**

1-800-828-8665 U.S. and Canada 1-775-883-1072 International  
+49 163 255 48 69 Europe