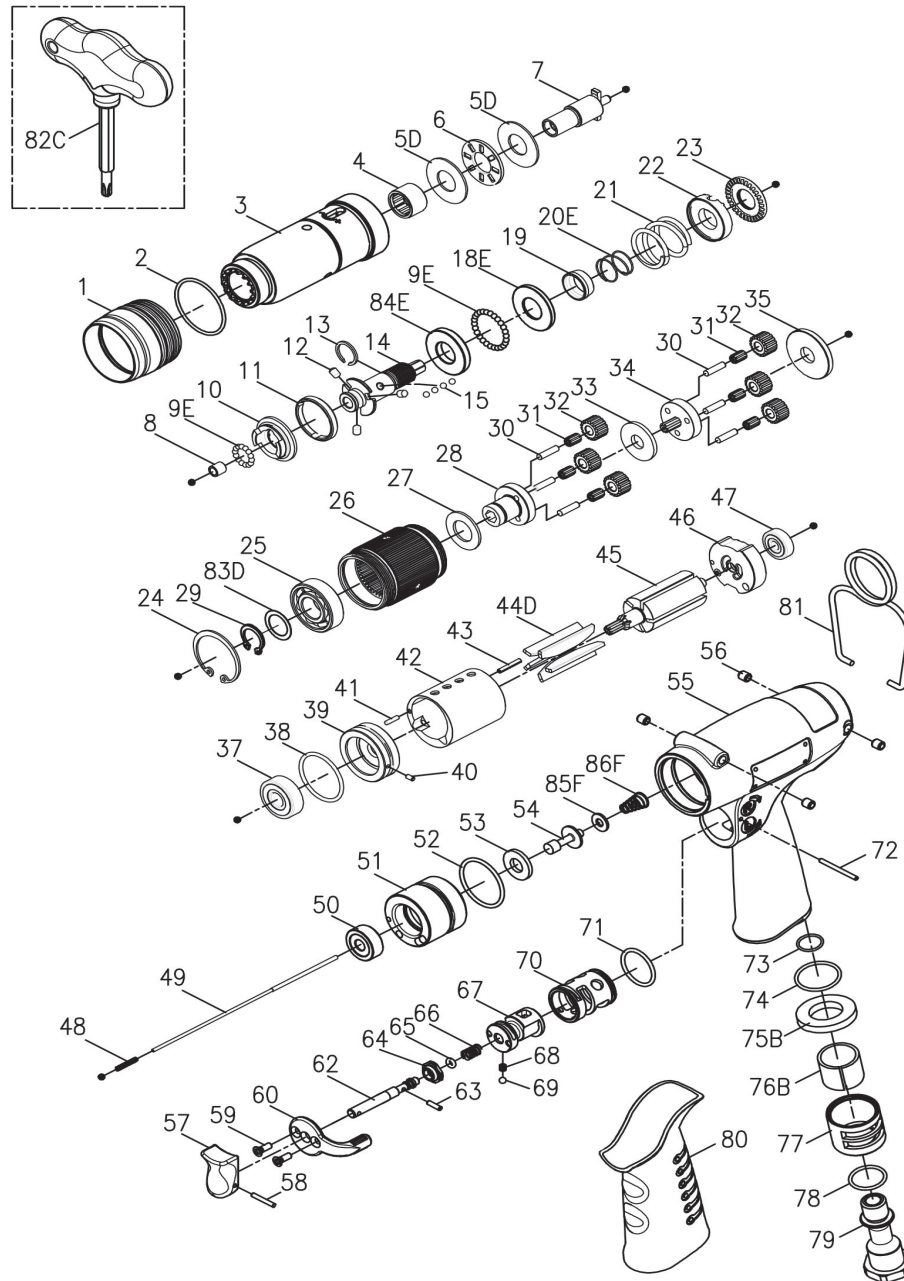


EXPLODED VIEW & PARTS LIST



Model	Drive Size	Torque Range		Free Speed RPM	Weight		Air Inlet inch	Noise Level dB(A)
		in-lb	N.m		lb	kg		
23571	1/4" Hex.	15 - 45	1.7 - 5.1	250	2.58	1.17	1/4"	75

Warranty

FULL SIX MONTH WARRANTY

Jiffy Air Tool warrants its products against any defects that are due to faulty material or workmanship for a six month period after the original date of customer purchase. This warranty does not include damage to the product resulting from accident, misuse, or repairs performed by unauthorized personnel. If the product should become defective within the warranty period, or you have questions regarding warranty or service, call Customer Service.

MODEL: 23571

TORQUE CONTROL PISTOL MOTOR

Index No.	Part No.	Description	Qty	Index No.	Part No.	Description	Qty	
1	B20S-207	Adjusting Cover	1	44D	BD30S-304D	Rotor Blade	5	
2	00-41127	O-Ring	1	45	BS30R-160-303	Rotor	1	
3	BS20S-380-201	Clutch Housing	1	46	C30S-305	Rear End Plate	1	
4	00-2415	Needle Bearing	1	47	00-2355	Ball Bearing	1	
5D	00-1516	Washer	2	48	BS20S-528	Spring	1	
6	00-2804	Roller Bearing	1	49	BS20SL-300-314	Valve Stem	1	
7	B20R-405	Anvil	1	220-CS30P-3009-1000		Cage Units	1	
220-BN20R-4016-1000				Clutch Units				1
8	00-6301	DU Bearing	1	50	C20-320	Holder Cap	1	
9E	00-3835	Steel Ball	39	51	C30-309	Cage	1	
10	B20S-425	Control Ring	1	52	00-41177	O-Ring	1	
11	B20S-424	Ejector Ring	1	53	C20-319	Shutting Spacer	1	
12	B20S-426	Ejector Pin	3	54	CS30-318	Shut Bar	1	
13	B20S-428C	Anvil Collar C	1	85F	00-1525	Plain Washer	1	
14	B20S-416B	Transmission Shaft	1	86F	CS20SL-515	Spring	1	
15	00-3826	Steel Ball	4	220-BSJ20P-1001-1G63		Motor Housing Units	1	
84E	BD20S-465	Washer	1	55	C20-101B	Motor Housing	1	
18E	BN15-433	Spring Seat	1	56	I40S-108	Bushing	4	
19	B20S-449	Control Ring	1	57	C20-504	Trigger	1	
20E	B30S-427	Spring	1	58	00-3354	Spring Pin	1	
21	B20S-429	Spring	1	59	00-0514	Flat Head Screw	2	
22	B20S-431	Adjusting Lock Ring	1	60	I100-503	Regulator Knob	1	
23	B30S-430	Adjusting Nut	1	62	IS40-505C	Valve Stem	1	
220-BS30SL-4040-1000				Gear Box Units				1
24	00-3113	Snap Ring	1	63	00-3356	Spring Pin	1	
29	00-3507	Snap Ring	1	64	I100-508	Bushing	1	
83D	BD15S-441	Washer	1	65	00-41172	O-Ring	1	
25	00-2305A	Ball Bearing	1	66	I40-507	Spring	1	
26	BS30R-160-440	Internal Gear	1	67	IS40-502	F/R Valve	1	
27	C20S-441	Washer	1	68	I100-506	Spring	1	
28	BS30R-160-442	Front Gear Cage	1	69	00-3813	Steel Ball (1/8")	1	
30	00-3408	Pin	6	70	I40-501	Valve Sleeve	1	
31	00-2422	Needle Bearing	6	71	00-41267	O-Ring	1	
32	BS30R-160-443A	Planet Gear A	6	72	I100-511	Pin	1	
33	B30S-160-444	Washer	1	73	00-4157	O-Ring	1	
34	BS30R-160-452	Rear Gear Cage Assy.	1	74	00-41244	O-Ring	1	
35	C30S-448	Rear Cover	1	75B	B30-601	Muffler	1	
220-BS30SL-3003-2000				Motor Units				1
37	00-2332	Ball Bearing	1	76B	I40-601	Muffler	1	
38	00-41177	O-Ring	1	77	I40-603	Exhaust Deflector	1	
39	B20S-301	Front Plate	1	78	00-4121	O-Ring	1	
40	00-3328	Spring Pin	1		I40-604A	Air Inlet (1/4"PF-19)		
41	00-3430	Pin	1	79	I40-604B	Air Inlet (1/4"PT-19)	1	
42	C30S-302	Cylinder	1		I40-604C	Air Inlet (1/4"NPT-18)		
43	00-3404	Pin	1	80	I60-103	Housing Rubber	1	
				81	I40S-102	Hanger	1	
				82C	BS40S-012	Adjusting Bit	1	

JIFFY AIR TOOL

USA 2254 Conestoga Drive | Carson City NV 89706-0434
Europe Unit 8 Lane End Industrial Park | High Wycombe | Bucks HP14 3BY UK

JIFFYAIRTOOL.COM

1-800-828-8665 U.S. and Canada 1-775-883-1072 International
+49 163 255 48 69 Europe