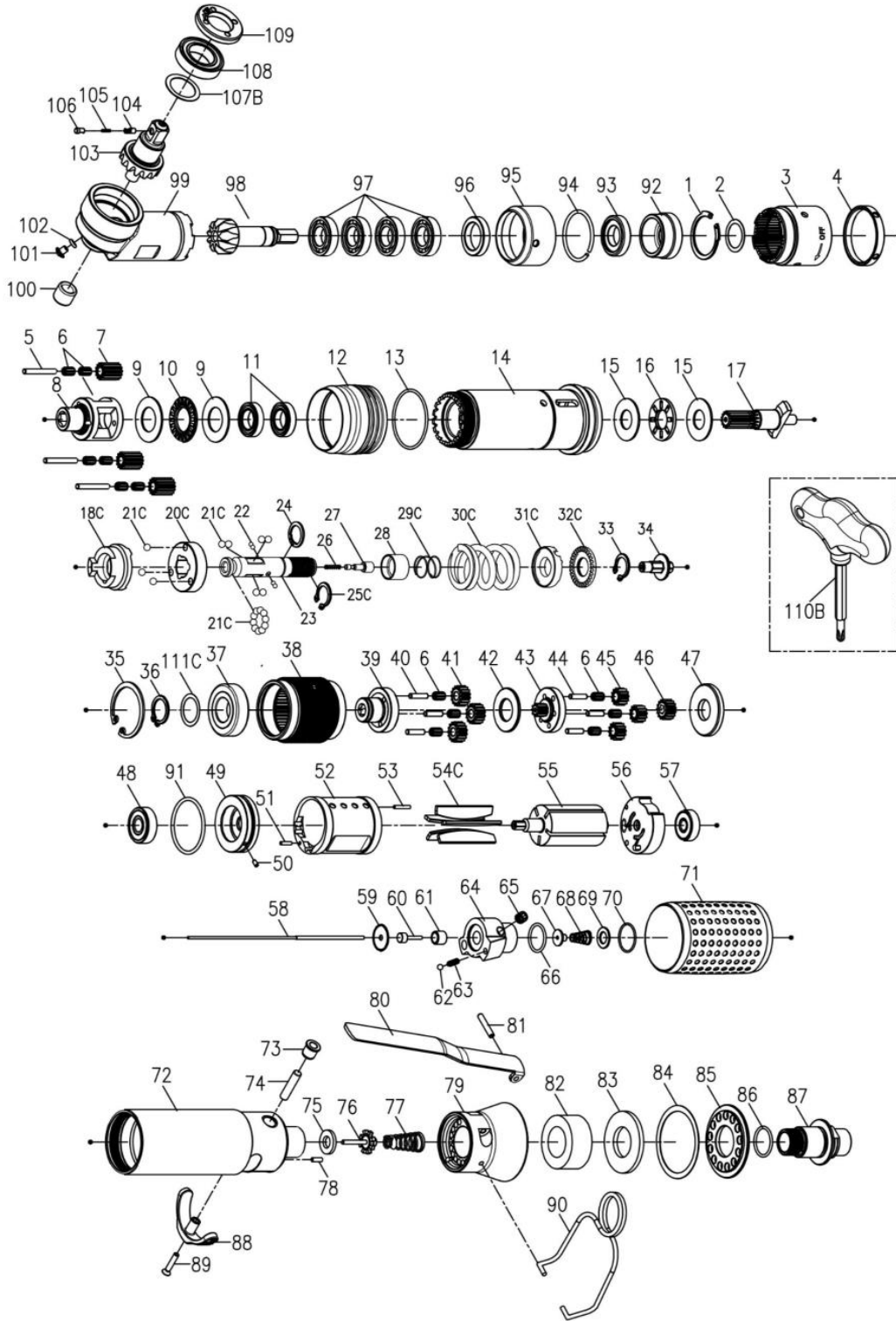


EXPLODED VIEW & PARTS LIST



Model	Drive Size	Torque Range		Free Speed	Weight		Air Inlet	Noise Level
		in-lb	N.m	RPM	lb	kg	inch	dB(A)
23557	3/8" Sq.	215 - 400	24 - 45	110	4.62	2.1	1/4"	85

TORQUE CONTROLLED ANGLE NUT-RUNNER

Edition : C

Index No.	Part No.	Description	Q'ty	Index No.	Part No.	Description	Q'ty
1	00-6105	Snap Ring (IR-28)	1	56	BS40S-305	Rear End Plate	1
2	D39PW15-1	Washer	1	57	00-2323	Ball Bearing (626ZZ)	1
3	BS60R-440	Internal Gear	1	58	BS40SL-314	Valve Stem	1
4	BS50R-737	Nut	1	220-BS40SL-5002-1000 Reverse Valve Units			1
5	000-3436	Pin (ø3x23L)	3	59	C30SL-525	Washer	1
6	00-2422	Needle Bearing (K3X5X7)	6	60	CS30SL-527	Piston	1
7	BS60S-443B	Planet Gear B	3	61	C20SL-526	Guide Ring	1
8	BS60R-422	Idler Gear Plate	1	62	00-3805	Steel Ball (1/8")	1
9	00-1515	Washer (ø15.2xø27.8x1t)	2	63	305F-034	Spring	1
10	00-2801	Roller Bearing (NTB1528)	1	64	BS40SL-502	Reverse Valve	1
11	00-2352	Ball Bearing (6801ZZ)	2	65	00-0606	Set Screw (M6x6L)	1
12	B40S-207	Adjusting Cover	1	66	00-41117	O-Ring (ø15xø1.5)	1
13	00-4174	O-Ring (ø31xø1.5)	1	67	CS30SL-514	Shut Block	1
14	BS40R-201	Clutch Housing	1	68	CS20SL-515	Spring	1
15	00-1516	Washer (ø12xø26x1t)	2	69	C30SL-533	Washer	1
16	00-2804	Roller Bearing (NTB1226)	1	70	00-41217	O-Ring (ø16xø1)	1
17	BS60S-732	Shaft Gear	1	71	B40S-103	Housing Rubber	1
220-BD40S-4016-1000 Clutch Units			1	220-BS40SL-1001-1000 Motor Housing Units			1
18C	BD40S-425	Clutch Ring	1	72	BS40SL-101	Motor Housing	1
20C	BD40S-433	Spring Seat	1	73	I40S-509	Bushing	1
21C	00-3815	Steel Ball (5/32")	19	74	BS40SL-510	Pin	1
22	00-3835	Steel Ball (ø2.5)	4	75	I40S-508	Bushing	1
23	B30S-416	Transmission Shaft	1	76	305C-021	Valve Stem	1
24	000-3012I	Snap Ring (ISTW-12)	1	77	C30S-515	Spring	1
25C	00-3516	Snap Ring(STW-11)	1	78	00-3448	Pin (ø2.5x8L)	1
26	B30-524	Spring	1	79	BS40SL-603	Exhaust Deflector	1
27	B30S-527	Piston	1	80	BS30R-160-504	Trigger	1
28	B30S-449	Control Ring	1	81	00-3308	Spring Pin (ø3x18L)	1
29C	B30S-427	Spring	1	82	BS40S-601A	Muffler	1
30C	B30S-429	Spring(ø4)	1	83	BS40S-601C	Muffler	1
31C	BD50S-431	Adjusting Lock Ring	1	84	BS40S-607	Gasket	1
32C	BD40S-430	Adjusting Nut	1	85	BS40S-608	Deflector Cap	1
33	00-3507	Snap Ring (S12)	1	86	00-41111	O-Ring (ø16xø1.5)	1
34	B30S-421	Connecting Shaft	1	87	B30S-604A	Air Inlet (1/4" PF-19)	1
220-BS60S-4040-1000 Gear Box Units			1	87	B30S-604B	Air Inlet (1/4" PT-19)	1
35	00-3104	Snap Ring (R32)	1	87	B30S-604C	Air Inlet (1/4" NPT-18)	1
36	00-3504	Snap Ring (S15)	1	88	B40S-503	Reverse Knob	1
111C	BD40S-441	Washer	1	89	00-0509	Screw (M3x16L)	1
37	00-2391	Ball Bearing (6002LU)	1	90	B20S-102	Hanger	1
38	BS40S-440	Internal Gear	1	92	BS60R-488	Bushing	1
39	BS40S-442	Front Gear Cage	1	220-BS60RX-7001-1000 Angle Housing Units			1
40	00-3444	Pin (ø3x12.8L)	3	93	D54WRB-6	Lock Nut	1
6	00-2422	Needle Bearing (K3X5X7)	6	94	D44WRB-1	Collar	1
41	BS40S-443A	Planet Gear A	3	95	BS60R-408	Lock Nut	1
42	BS40S-444	Washer	1	96	BS60R-487	Washer	1
43	BS40S-452	Rear Gear Cage Assy.	1	97	000-2305	Ball Bearing (6901ZZ)	4
44	00-3408	Pin (ø3x12L)	3	98	BS60RX-704A	Main Bevel Gear	1
45	BS60S-443A	Planet Gear A	3	99	D42WRB-1#BZ	Angle Housing	1
46	BS60S-447	Rotor Gear	1	100	000-2413	Needle Bearing(BK0810)	1
47	BS40S-448	Rear Cover	1	101	000-1340	Cap Screw(M4x4.5L)	1
220-BS60S-3003-1000 Motor Units			1	102	00-4153	O-Ring(ψ3×ψ1.5)	1
48	00-2332	Ball Bearing (608ZZ)	1	103	33249-WRCA-22	Bevel Gear	1
91	00-41241	O-Ring (ø32xø1.5)	1	104	I40S-462-B	Upper Pin	1
49	BS40S-301	Front Plate	1	105	I40S-464	Spring	1
50	00-3328	Spring Pin (ø2x4L)	1	106	I40S-463-B	Lower Pin	1
51	00-3430	Pin (ø2x8L)	1	107B	BS60R-739	Washer	1
52	BS40S-302	Cylinder	1	108	000-2344	Ball Bearing	1
53	00-3447	Pin (ø2x12L)	1	109	D54WRB-4#BZ	Lock Nut	1
54C	BD40S-304D	Rotor Blade	5	110B	BS40S-012	Adjusting Bit	1
55	BS60S-303	Rotor	1				

Warranty

FULL SIX MONTH WARRANTY

Jiffy Air Tool warrants its products against any defects that are due to faulty material or workmanship for a six month period after the original date of customer purchase. This warranty does not include damage to the product resulting from accident, misuse, or repairs performed by unauthorized personnel. If the product should become defective within the warranty period, or you have questions regarding warranty or service, call Customer Service.

JIFFY AIR TOOL

USA 2254 Conestoga Drive | Carson City NV 89706-0434
 Europe Unit 8 Lane End Industrial Park | High Wycombe | Bucks HP14 3BY UK

JIFFYAIRTOOL.COM

1-800-828-8665 U.S. and Canada 1-775-883-1072 International
 +49 163 255 48 69 Europe