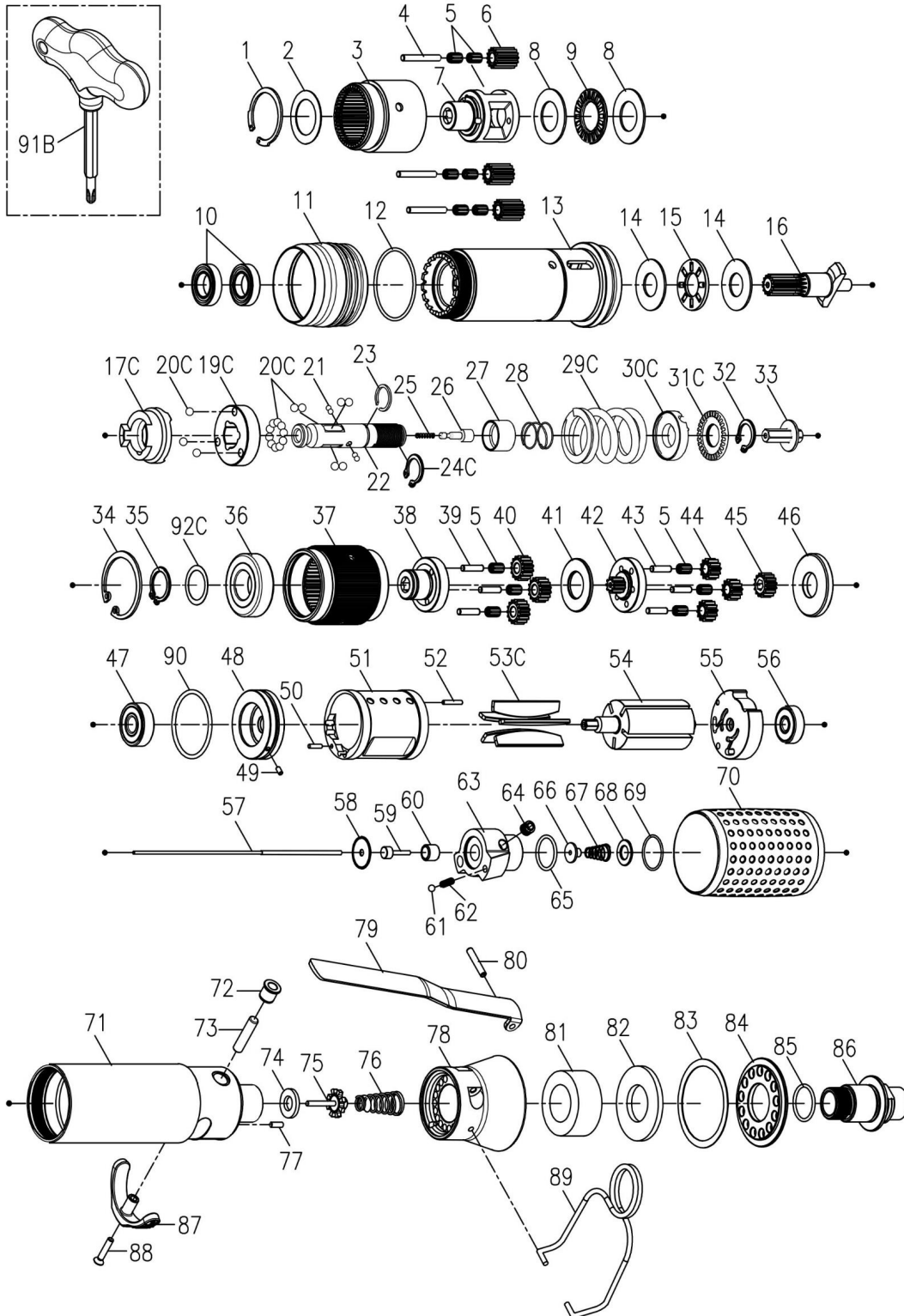


EXPLODED VIEW & PARTS LIST



Model	Drive Size	Torque Range		Free Speed RPM	Weight		Air Inlet inch	Noise Level dB(A)
		in-lb	N.m		lb	kg		
23556	1/4" Hex.	165 - 300	18.6 - 33.7	160	4.5	2	1/4	85

TORQUE CONTROL STRAIGHT MOTOR

Edition : C

Index No.	Part No.	Description	Q'ty	Index No.	Part No.	Description	Q'ty
1	00-6105	Snap Ring (IR-28)	1	47	00-2332	Ball Bearing (608ZZ)	1
2	BS60S-411	Washer	1	90	00-41241	O-Ring (ø32xø1.5)	1
3	BS60S-440	Internal Gear	1	48	BS40S-301	Front Plate	1
4	000-3436	Pin (ø3x23L)	3	49	00-3328	Spring Pin (ø2x4L)	1
5	00-2422	Needle Bearing (K3X5X7)	6	50	00-3430	Pin (ø2x8L)	1
6	BS60S-443B	Plant Gear B	3	51	BS40S-302	Cylinder	1
7	BS60S-422	Idler Gear Plate	1	52	00-3447	Pin (ø2x12L)	1
8	00-1515	Washer (ø15.2xø27.8x1t)	2	53C	BD40S-304D	Rotor Blade	5
9	00-2801	Roller Bearing (NTB1528)	1	54	BS60S-303	Rotor	1
10	00-2352	Ball Bearing (6801ZZ)	2	55	BS40S-305	Rear End Plate	1
11	B40S-207	Adjusting Cover	1	56	00-2323	Ball Bearing (626ZZ)	1
12	00-4174	O-Ring (ø31xø1.5)	1	57	BS40SL-314	Valve Stem	1
13	BS40R-201	Clutch Housing	1	220-BS40SL-5002-1000 Reverse Valve Units			1
14	00-1516	Washer (ø12xø26x1t)	2	58	C30SL-525	Washer	1
15	00-2804	Roller Bearing (NTB1226)	1	59	CS30SL-527	Piston	1
16	BS60S-732	Shaft Gear	1	60	C20SL-526	Guide Ring	1
220-BD40S-4016-1000 Clutch Units			1	61	00-3805	Steel Ball (1/8")	1
17C	BD40S-425	Clutch Ring	1	62	305F-034	Spring	1
19C	BD40S-433	Spring Seat	1	63	BS40SL-502	Reverse Valve	1
20C	00-3815	Steel Ball (5/32")	19	64	00-0606	Set Screw (M6x6L)	1
21	00-3835	Steel Ball (ø2.5)	4	65	00-41117	O-Ring (ø15xø1.5)	1
22	B30S-416	Transmission Shaft	1	66	CS30SL-514	Shut Block	1
23	000-3012I	Snap Ring (ISTW-12)	1	67	CS20SL-515	Spring	1
24C	00-3516	Snap Ring (STW-11)	1	68	C30SL-533	Washer	1
25	B30-524	Spring	1	69	00-41217	O-Ring (ø16xø1)	1
26	B30S-527	Piston	1	70	B40S-103	Housing Rubber	1
27	B30S-449	Control Ring	1	220-BS40SL-1001-1000 Motor Housing Units			1
28	B20S-427	Spring	1	71	BS40SL-101	Motor Housing	1
29C	B30S-429	Spring	1	72	I40S-509	Bushing	1
30C	BD50S-431	Adjusting Lock Ring	1	73	BS40SL-510	Pin	1
31C	BD40S-430	Adjusting Nut	1	74	I40S-508	Bushing	1
32	00-3507	Snap Ring (S12)	1	75	305C-021	Valve Stem	1
33	B30S-421	Connecting Shaft	1	76	C30S-515	Spring	1
220-BS60S-4040-1000 Gear Box Units			1	77	00-3448	Pin (ø2.5x8L)	1
34	00-3104	Snap Ring (R32)	1	78	BS40SL-603	Exhaust Deflector	1
35	00-3504	Snap Ring (S15)	1	79	BS30R-160-504	Trigger	1
92C	BD40S-441	Washer	1	80	00-3308	Spring Pin (ø3x18L)	1
36	00-2391	Ball Bearing (6002LU)	1	81	BS40S-601A	Muffler	1
37	BS40S-440	Internal Gear	1	82	BS40S-601C	Muffler	1
38	BS40S-442	Front Gear Cage	1	83	BS40S-607	Gasket	1
39	00-3444	Pin (ø3x12.8L)	3	84	BS40S-608	Deflector Cap	1
5	00-2422	Needle Bearing (K3X5X7)	6	85	00-41111	O-Ring (ø16xø1.5)	1
40	BS40S-443A	Plant Gear A	3		B30S-604A	Air Inlet (1/4" PF-19)	
41	BS40S-444	Washer	1	86	B30S-604B	Air Inlet (1/4" PT-19)	1
42	BS40S-452	Rear Gear Cage Assy.	1		B30S-604C	Air Inlet (1/4" NPT-18)	
43	00-3408	Pin (ø3x12L)	3	87	B40S-503	Reverse Knob	1
44	BS60S-443A	Plant Gear A	3	88	00-0509	Screw (M3x16L)	1
45	BS60S-447	Rotor Gear	1	89	B20S-102	Hanger	1
46	BS40S-448	Rear Cover	1	91B	BS40S-012	Adjusting Bit	1
220-BS60S-3003-1000 Motor Units			1				

Warranty

FULL SIX MONTH WARRANTY

Jiffy Air Tool warrants its products against any defects that are due to faulty material or workmanship for a six month period after the original date of customer purchase. This warranty does not include damage to the product resulting from accident, misuse, or repairs performed by unauthorized personnel. If the product should become defective within the warranty period, or you have questions regarding warranty or service, call Customer Service.