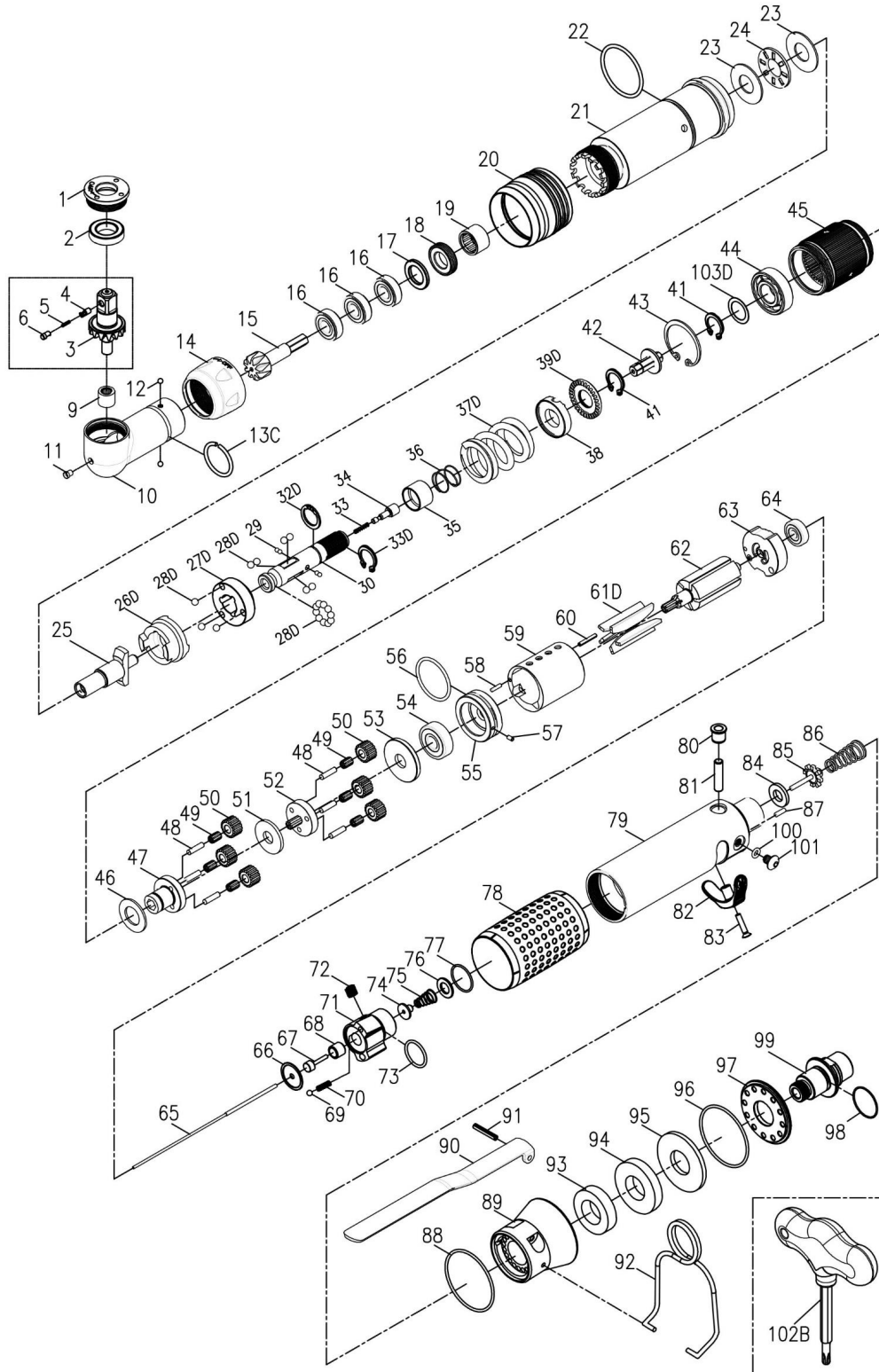


**EXPLODED VIEW & PARTS LIST**



Model	Drive Size	Torque Range		Free Speed	Weight		Air Inlet	Noise Level
		in-lb	N.m	RPM	lb	kg	inch	dB(A)
23544	3/8" Sq.	20 - 115	2.2 - 13	160	3.03	1.38	1/4"	75

TORQUE CONTROLLED ANGLE NUT RUNNER

Edition: D

Index No.	Part No.	Description	Q'ty	Index No.	Part No.	Description	Q'ty	
<b>220-BS30RX-7001-1D14 3/8" SQ Angle Housing Units</b>				<b>1</b>	53	C30S-448	Rear Cover 1	
1	BS30R-160-706	Lock Nut	1	<b>220-BS30SL-3003-1000 Motor Units</b>				<b>1</b>
2	00-2352	Ball Bearing(6801ZZ)	1	54	00-2332	Ball Bearing (608ZZ)	1	
3	BS30RX-160-730A	Bevel Gear Assy. (3/8" SQ)	1	55	B20S-301	Front Plate	1	
4	I40S-462-B	Upper Pin	1	56	00-41177	O-Ring (Ø25.12xØ1.78)	1	
5	I40S-464	Spring	1	57	00-3328	Spring Pin (Ø2x4L)	1	
6	I40S-463-B	Lower Pin	1	58	00-3430	Pin (Ø2x8L)	1	
9	00-2418	Needle Bearing(BK0609)	1	59	C30S-302	Cylinder	1	
10	BS30R-160-701	Angle Housing	1	60	00-3447	Pin (Ø2x12L)	1	
11	00-4603	Grease Fitting (1/8")	1	61D	BD30S-304D	Rotor Blade	5	
12	00-3826	Steel Ball (Ø3)	2	62	BS30R-160-303	Rotor	1	
13C	CS20R-708B	Collar	1	63	C30S-305	Rear End Plate	1	
14	BS30R-160-702	Lock Nut	1	64	00-2355	Ball Bearing(625Z)	1	
15	BS30RW-160-704A	Main Bevel Gear	1	65	BS30SL-160-314	Valve Stem	1	
16	00-2372	Ball Bearing(698Z)	3	66	C30SL-525	Washer	1	
17	BS20R-300-487B	Washer	1	67	CS30SL-527	Piston	1	
18	CS30R-709	Lock Nut	1	68	C20SL-526	Guide Ring	1	
19	00-2415	Needle Bearing (HK1210)	1	69	00-3805	Steel Ball (1/8")	1	
20	B30S-207	Adjusting Cover	1	70	305F-034	Spring	1	
21	BS30R-160-201	Clutch Housing	1	71	C30SL-502	Reverse Valve	1	
22	00-4174	O-Ring (Ø31xØ1.5)	1	72	00-0606	Set Screw (M6x6L)	1	
23	00-1516	Washer (Ø12xØ26x1t)	2	73	00-41117	O-Ring (Ø15xØ1.5)	1	
24	00-2804	Roller Bearing (NTB1226)	1	74	CS30SL-514	Shut Block	1	
25	B30R-405	Anvil	1	75	CS20SL-515	Spring	1	
<b>220-BD30S-4016-1000 Clutch Units</b>				<b>1</b>	76	C30SL-533	Washer	1
26D	BD30S-425	Clutch Ring	1	77	00-41217	O-Ring (Ø16xØ1)	1	
27D	BD30S-433	Spring Seat	1	78	B20S-103	Housing Rubber	1	
28D	00-3815	Steel Ball (5/32")	19	<b>220-BS30SL-1001-1G63 Motor Housing Units</b>				<b>1</b>
29	00-3835	Steel Ball (Ø2.5)	4	79	B30SL-101	Motor Housing	1	
30	B30S-416	Transmission Shaft	1	80	I40S-509	Bushing	1	
32D	000-3012I	Snap Ring (ISTW-12)	1	81	IS40S-510	Pin	1	
33D	00-3516	Snap Ring (STW-11)	1	84	I40S-508	Bushing	1	
33	B30-524	Spring	1	85	305C-021	Valve Stem	1	
34	B30S-527	Piston	1	86	C30S-515	Spring	1	
35	B30S-449	Control Ring	1	87	00-3448	Pin (Ø2.5x8L)	1	
36	B30S-427	Spring( 4)	1	88	00-41223	O-Ring (Ø31xØ1)	1	
37D	BD30S-429		1	89	B30SL-603	Exhaust Deflector	1	
38	B30S-431	Adjusting Lock Ring	1	90	BS30R-160-504	Trigger	1	
39D	BD40S-430	Adjusting Nut	1	91	00-3308	Spring Pin (Ø3x18L)	1	
41	00-3507	Snap Ring (S12)	1	93	B30S-601A	Muffler	1	
42	B30S-421	Connecting Shaft	1	94	B30S-601B	Muffler	1	
<b>220-BS30SL-4040-1000 Gear Box Units</b>				<b>1</b>	95	B30S-601C	Muffler	1
41	00-3507	Snap Ring (S12)	1	96	00-41224	O-Ring (Ø38xØ1.5)	1	
43	00-3113	Snap Ring (R28)	1	97	B30S-608	Deflector Cap	1	
103D	BD15S-441	Washer	1	98	00-41111	O-Ring (Ø16xØ1.5)	1	
44	00-2305A	Ball Bearing (6001)	1		B30S-604A	Air Inlet (1/4"PF-19)		
45	BS30R-160-440	Internal Gear	1	99	B30S-604B	Air Inlet (1/4"PT-19)	1	
46	C20S-441	Washer	1		B30S-604C	Air Inlet (1/4"NPT-18)		
47	BS30R-160-442	Front Gear Cage	1	100	00-41156	O-Ring (Ø3.5xØ1.5)	1	
48	00-3408	Pin (Ø3x12L)	6	101	00-1304	Cap Screw (M5x6L)	1	
49	00-2422	Needle Bearing (INA Ø3xØ5x7t)	6	82	C30S-503	Reverse Knob	1	
50	BS30R-160-443A	Planet Gear A	6	83	00-0509	Screw (M3x16L)	1	
51	B30S-160-444	Washer	1	92	B20S-102	Hanger	1	
52	BS30R-160-452	Rear Gear Cage Assy.	1	102B	BS40S-012	Adjusting Bit	1	

Warranty

FULL SIX MONTH WARRANTY

Jiffy Air Tool warrants its products against any defects that are due to faulty material or workmanship for a six month period after the original date of customer purchase. This warranty does not include damage to the product resulting from accident, misuse, or repairs performed by unauthorized personnel. If the product should become defective within the warranty period, or you have questions regarding warranty or service, call Customer Service.