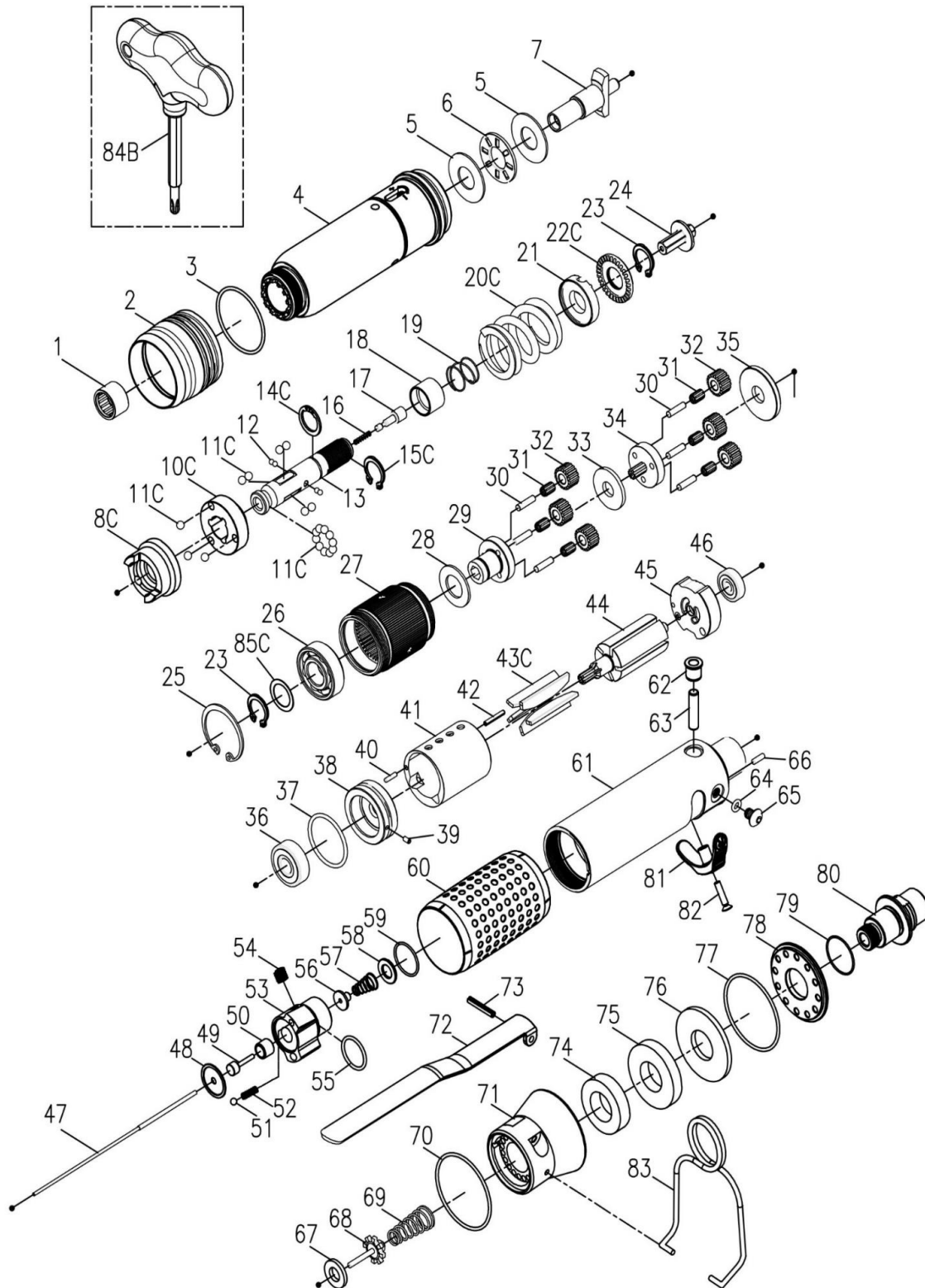


EXPLODED VIEW & PARTS LIST



Model	Drive Size	Torque Range		Free Speed	Weight		Air Inlet	Noise Level
		in-lb	N.m	RPM	lb	kg	inch	dB(A)
23542	1/4" Hex.	35 - 80	4 - 9	250	2.5	1.1	1/4	75

TORQUE CONTROLLED STRAIGHT MOTOR

Edition : C

Index No.	Part No.	Description	Q'ty	Index No.	Part No.	Description	Q'ty
1	00-2415	Needle Bearing (HK1210)	1	43C	BD30S-304D	Rotor Blade	5
2	B30S-207	Adjusting Cover	1	44	BS30R-160-303	Rotor	1
3	00-4174	O-Ring (Ø31xØ1.5)	1	45	C30S-305	Rear End Plate	1
4	BS30S-250-201	Clutch Housing	1	46	00-2355	Ball Bearing(625Z)	1
5	00-1516	Washer (Ø12xØ26x1t)	2	47	BS30SL-160-314	Valve Stem	1
6	00-2804	Roller Bearing (NTB1226)	1	220-CS30SL-5002-1000 Reverse Valve Units			1
7	B30R-405	Anvil	1	48	C30SL-525	Washer	1
220-BD30S-4016-1000 Clutch Units			1	49	CS30SL-527	Piston	1
8C	BD30S-425	Clutch Ring	1	50	C20SL-526	Guide Ring	1
10C	BD30S-433	Spring Seat	1	51	00-3805	Steel Ball (1/8")	1
11C	00-3815	Steel Ball (5/32")	19	52	305F-034	Spring	1
12	00-3835	Steel Ball (Ø2.5)	4	53	C30SL-502	Reverse Valve	1
13	B30S-416	Transmission Shaft	1	54	00-0606	Set Screw (M6x6L)	1
14C	000-3012I	Snap Ring (ISTW-12)	1	55	00-41117	O-Ring (Ø15xØ1.5)	1
15C	00-3516	Snap Ring (STW-11)	1	56	CS30SL-514	Shut Block	1
16	B30-524	Spring	1	57	CS20SL-515	Spring	1
17	B30S-527	Piston	1	58	C30SL-533	Washer	1
18	B30S-449	Control Ring	1	59	00-41217	O-Ring (Ø16xØ1)	1
19	B30S-427	Spring	1	60	B20S-103	Housing Rubber	1
20C	BD30S-429	Spring	1	220-BS30SL-1001-1000 Motor Housing Units			1
21	B30S-431	Adjusting Lock Ring	1	61	B30SL-101	Motor Housing	1
22C	BD40S-430	Adjusting Nut	1	62	I40S-509	Bushing	1
23	00-3507	Snap Ring (S12)	1	63	IS40S-510	Pin	1
24	B30S-421	Connecting Shaft	1	64	00-41156	O-Ring (Ø3.5xØ1.5)	1
220-BS30SL-4040-1000 Gear Box Units			1	65	00-1304	Cap Screw (M5x6L)	1
25	00-3113	Snap Ring (R28)	1	66	00-3448	Pin (Ø2.5x8L)	1
85C	BD15S-441	Washer	1	67	I40S-508	Bushing	1
26	00-2305A	Ball Bearing (6001)	1	68	305C-021	Valve Stem	1
27	BS30R-160-440	Internal Gear	1	69	C30S-515	Spring	1
28	C20S-441	Washer	1	70	00-41223	O-Ring (Ø31xØ1)	1
29	BS30R-160-442	Front Gear Cage	1	71	B30SL-603	Exhaust Deflector	1
23	00-3507	Snap Ring (S12)	1	72	BS30R-160-504	Trigger	1
30	00-3408	Pin (Ø3x12L)	6	73	00-3308	Spring Pin (Ø3x18L)	1
31	00-2422	Needle Bearing (K3X5X7)	6	74	B30S-601A	Muffler	1
32	BS30R-160-443A	Plant Gear A	6	75	B30S-601B	Muffler	1
33	B30S-160-444	Washer	1	76	B30S-601C	Muffler	1
34	BS30R-160-452	Rear Gear Cage Assy.	1	77	00-41224	O-Ring (Ø38xØ1.5)	1
35	C30S-448	Rear Cover	1	78	B30S-608	Deflector Cap	1
220-BS30SL-3003-1000 Motor Units			1	79	00-41111	O-Ring (Ø16xØ1.5)	1
36	00-2332	Ball Bearing (608ZZ)	1		B30S-604A	Air Inlet (1/4"PF-19)	
37	00-41177	O-Ring (Ø25.12xØ1.78)	1	80	B30S-604B	Air Inlet (1/4"PT-19)	1
38	B20S-301	Front Plate	1		B30S-604C	Air Inlet (1/4"NPT-18)	
39	00-3328	Spring Pin (Ø2x4L)	1	81	C30S-503	Reverse Knob	1
40	00-3430	Pin (Ø2x8L)	1	82	00-0509	Screw (M3x16L)	1
41	C30S-302	Cylinder	1	83	B20S-102	Hanger	1
42	00-3447	Pin (Ø2*12L)	1	84B	BS40S-012	Adjusting Bit	1

Warranty

FULL SIX MONTH WARRANTY

Jiffy Air Tool warrants its products against any defects that are due to faulty material or workmanship for a six month period after the original date of customer purchase. This warranty does not include damage to the product resulting from accident, misuse, or repairs performed by unauthorized personnel. If the product should become defective within the warranty period, or you have questions regarding warranty or service, call Customer Service.