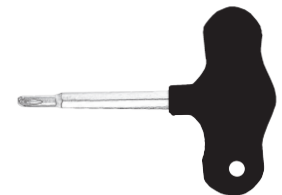
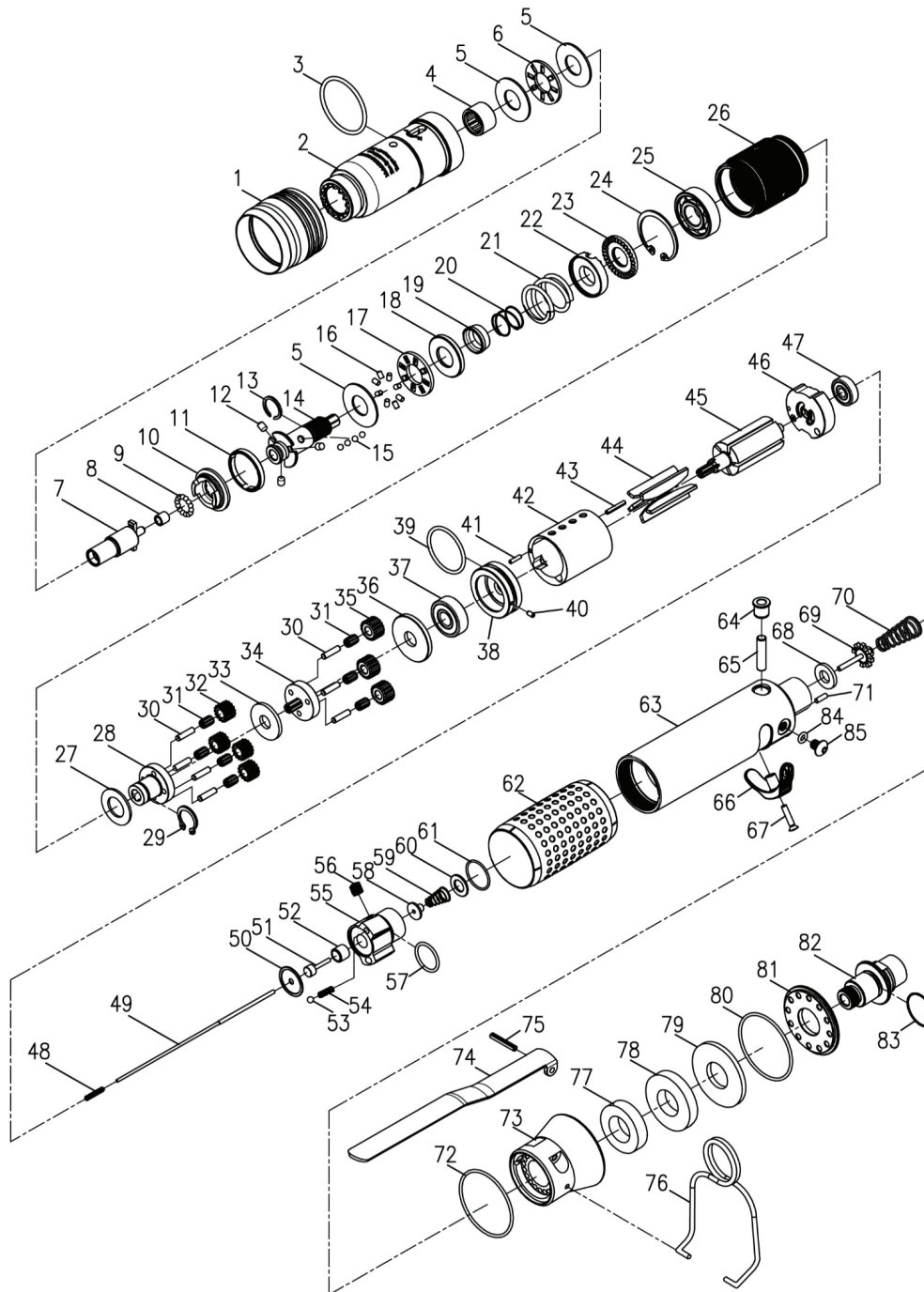


**EXPLODED VIEW & PARTS LIST**



BS40S-012 Adjusting Bit (Included)



Vibration Level (m/sec<sup>2</sup>): 2.5



Noise Level (dBA): 78

**Warranty**

**FULL SIX MONTH WARRANTY**

Jiffy Air Tool warrants its products against any defects that are due to faulty material or workmanship for a six month period after the original date of customer purchase. This warranty does not include damage to the product resulting from accident, misuse, or repairs performed by unauthorized personnel. If the product should become defective within the warranty period, or you have questions regarding warranty or service, call Customer Service.

Ref #	Part Number	Description	Qty
1	B20S-207	Adjusting Cover	1
2	BS20S-380-201	Clutch Housing	1
3	00-41127	O-Ring	1
4	00-2415	Needle Bearing	1
5	00-1516	Washer	3
6	00-2804	Roller Bearing	1
7	B20R-405	Anvil	1
8	00-6301	DU Bearing	1
9	00-3835	Steel Ball	13
10	B20S-425	Control Ring	1
11	B20S-424	Ejector Ring	1
12	B20S-426	Ejector Pin	3
13	B20S-428C	Anvil Collar C	1
14	B20S-416	Transmission Shaft	1
15	00-3826	Steel Ball	4
16	00-3471	Pin	8
17	B20S-410	Washer	1
18	B20S-433	Spring Seat	1
19	B20S-449	Control Ring	1
20	B20S-427	Spring	1
21	B20S-429	Spring	1
22	B20S-431	Adjusting Lock Ring	1
23	B30S-430	Adjusting Nut	1
24	00-3113	Snap Ring	1
25	00-2305A	Ball Bearing)	1
26	BS30R-160-440	Internal Gear	1
27	C20S-441	Washer	1
28	BS20R-300-442	Front Gear Cage	1
29	00-3507	Snap Ring	1
30	00-3408	Pin	7
31	00-2422	Needle Bearing	7
32	BS20R-300-443B	Plant Gear B	4
33	C20S-444B	Washer	1
34	BS20R-300-452	Rear Gear Cage Assem.	1
35	BS30R-160-443A	Plant Gear A	3
36	C30S-448	Rear Cover	1
37	00-2332	Ball Bearing	1
38	B20S-301	Front Plate	1
39	00-41177	O-Ring	1
40	00-3328	Spring Pin	1
41	00-3430	Pin	1
42	C30S-302	Cylinder	1
43	00-3447	Pin	1
44	B30S-304	Rotor Blade	5

Ref #	Part Number	Description	Qty
45	BS30R-160-303	Rotor	1
46	C30S-305	Rear End Plate	1
47	00-2355	Ball Bearing	1
48	C08S-528	Spring	1
49	BS20SL-300-314	Valve Stem	1
50	C30SL-525	Washer	1
51	CS30SL-527	Piston	1
52	C20SL-526	Guide Ring	1
53	00-3805	Steel Ball (1/8")	1
54	305F-034	Spring	1
55	C30SL-502	Reverse Valve	1
56	00-0606	Screw	1
57	00-41117	O-Ring	1
58	CS30SL-514	Shut Block	1
59	CS20SL-515	Spring	1
60	C30SL-533	Washer	1
61	00-41217	O-Ring	1
62	B20S-103	Housing Rubber	1
63	B30SL-101	Motor Housing	1
64	140S-509	Bushing	1
65	IS40S-510	Pin	1
66	C30S-503	Reverse Knob	1
67	00-0509	Screw	1
68	140S-508	Bushing	1
69	305C-021	Valve Stem	1
70	C30S-515	Spring	1
71	00-3448	Pin	1
72	00-41223	O-Ring	1
73	B30SL-603	Exhaust Deflector	1
74	BS30R-160-504	Trigger	1
75	00-3308	Spring Pin	1
76	B20S-102	Hanger	1
77	B30S-601A	Muffler	1
78	B30S-601B	Muffler	1
79	B30S-601C	Muffler	1
80	00-41224	O-Ring	1
81	B30S-608	Deflector Cap	1
82	B30S-604C	Air Inlet (1/4"NPT-18)	1
83	00-41111	O-Ring	1
84	00-41156	O-Ring	1
85	00-1304	Cap Screw	1

